



# Avon and Badsquash AGM minutes

Tuesday 15th May, 2018

Workout Harbourside, Floating Harbour, Welsh Back, Bristol, BS1 4SB.

6pm - Exhibition match and nibbles

7.30pm - The AGM

## Contents

Contents	1
Overall	3
Matters arising and approval of 2017 AGM minutes	3
County events	3
Masters	3
Ladies O55	3
Ladies senior	4
Juniors intercounty	4
Junior events	4
Avon junior boxes	4
Girls	4
Racketball	4
Boys county development	5
Girls county development	5
League participation	6
Players	6
Clubs	7
ES NGB	7

ES membership	<b>7</b>
CAN - County Association Network	<b>7</b>
Treasurer's report	<b>9</b>
Profit and loss	9
Balance Sheet	10
County strategic development plan	<b>11</b>
How did we get here?	11
Where do we go from here?	11
And?	11
Baby steps	11
What is it?	11
Five key elements	11
Coaches are key	12
Invest and grow	12
Results from SE Region	12
Skills needed to support the committee	13
Kent example	14
Questions and discussion ...	14
County Matches from 2018/19 onwards...	<b>14</b>
League fees analysis	<b>15</b>
Discussion on charging £1 per appearance	16
Discussion on Inter-county support	16
<b>Election of officers</b>	<b>16</b>
Roll of honour	<b>17</b>
George Morgan best junior	17
Jeremy Burns greatest contribution to squash award	17
Most improved player of the year	17
SquashLevels Cup	17
League reports	<b>18</b>
Mixed league report	18

2017-2018 Mixed league play-offs	18
Ladies league report	18
Topics raised/Rule updates	18
IT update	19
ES membership tracking	19
Avon County Website	19
Contact the committee	19

## Overall

Not just an AGM..

- A shoot out from 6 of the best players in the county
- Savoury nibbles
- £5 off your team's league fees
- More of an end of season bash than a dry AGM
- Be part of the AGM – contribute. This is your county.
- Wear an Avon hat for one evening of the year...
- Give us your opinion. We have an important topic (or two) this year.

## Matters arising and approval of 2017 AGM minutes

Last year's minutes were approved. There were no matters arising.

## County events

Match details and results are all on League Master which was used to run the events. All the results were fed in to SquashLevels.

- Seniors - <http://intercounty.countyleagues.co.uk/>
- Masters - <http://mastersicc.countyleagues.co.uk/>
- Juniors - <http://junioricc.countyleagues.co.uk/>

## Masters

Avon 045's finished runner up in the Autumn Div One match after a closely fought contest with Wiltshire & Cornwall, with Devon pulling out struggling to get a side. A few guys made their county debut and had great wins - Chris Hall and Rich Dodsworth from David Lloyd Westbury and James Jefferson (JJ) from David Lloyd Long Ashton. We were then through to Premier Promotion South group with Derby, Cheshire, Wiltshire and ourselves. Unfortunately, it fell on the weekend the snow came and the match was cancelled.

## Ladies 055

Rose, Pippa, Louise. Got to finals. Waiting to play final.

## Ladies senior

First team in div 1. Nearly got into prem. Second team stayed in div 2.

## Juniors intercounty

Changing of the guard as old moved on. New juniors.

Entered 3 boys teams. Did well. Getting a few more juniors from Avon clubs. More diversity. At least three clubs encouraging juniors. Learning what it takes to represent county. Hoping to put in more teams next year.

Junior development squads once/month. Extra coaching and a platform to make it to the county teams. Next year merge boys and girls. Hoping to put a county squad together. Feels like it's moving forward.

## Junior events

Hosted at Workout, Lansdown, Redland. Graded.

Introduction to competition.

Looking for clubs to host events - 30 to 40 juniors.

## Avon junior boxes

All done on one day. 6 boxes with 5 players. Lovely atmosphere.

## Girls

Will have done about 7 sessions over the year. Haven't had a county team for a while. Current girls are wide age groups. Very social.

## Racketball

After the "roaring" success of the inaugural racketball season last summer, Avon decided to enter a Men's senior racketball team for the first time in many a year.

After some last minute scrambles for team members, Long Ashton David LLOYD and Workout combined. And John Welton, Ian Fudge, Chris Wood, myself, and Rob Watkins headed off to Oxfordshire to see how they fared against the top teams in the south.

It didn't start well with a convincing defeat to Sussex. But, the tide turned and a resounding 4-1 win against Lincolnshire finished Saturday well.

After a quiet night in the local Travelodge, we went into Sunday morning full of confidence. A tight 3-2 win against Merseyside set up a decider against the home county. They unfortunately came out on in a 4-1 win which left us missing out on promotion on games countback.

The second weekend was unfortunately called off by England Squash, but we'll no doubt take this confidence over to future years..

## Squash 57 Division 1

[Home](#) | [Categories](#)

Group A		P	W	L	D	F	A	Pen	Total
Sussex		4	4	0	0	72	21	0	72
Oxfordshire	HOST	4	2	2	0	51	44	0	51
Merseyside		4	2	2	0	48	42	0	48
Avon		4	2	2	0	42	49	0	42
Lincolnshire		4	0	4	0	17	74	0	17

[View Results Summary](#) | [View Results Detail](#)      Host Venue: Racquets Fitness Centre

Nom	Avon	Nom	Lincolnshire	Result	Games
-1	<b>John Welton</b>	1-1	Daniel Carlile	3 0	11/7 11/7 11/6
-2	<b>Ian Fudge</b>	1-2	Russell Watkins	3 0	11/2 11/2 11/3
-3	Chris Wood	1-3	<b>Nigel Truman</b>	2 3	5/11 11/9 11/7 5/11 9/11
-4	<b>Duncan Higgins</b>	1-4	Kevin Matthews	3 0	12/10 11/6 11/5
-5	<b>Rob Watkins</b>	1-5	Ross Frisby	3 2	11/9 8/11 8/11 11/9 11/8

Nom	Merseyside	Nom	Avon	Result	Games
1-2	<b>Connor Sheen</b>	-1	John Welton	3 2	12/14 7/11 11/9 11/9 11/5
1-3	<b>Andrew Breen</b>	-2	Ian Fudge	3 0	11/7 11/7 11/4
1-4	Luke Mercer	-3	<b>Chris Wood</b>	0 3	2/11 9/11 9/11
1-5	Karl Mullins	-4	<b>Duncan Higgins</b>	0 3	7/11 4/11 5/11
1-6	Lee Walton	-5	<b>Rob Watkins</b>	0 3	9/11 8/11 4/11

Nom	Sussex	Nom	Avon	Result	Games
1-1	<b>Brandon Hanley</b>	-1	John Welton	3 0	11/9 11/7 11/8
1-2	<b>Ross Bryant</b>	-2	Ian Fudge	3 0	11/4 11/5 11/1
1-3	<b>Chris O'Neill</b>	-3	Chris Wood	3 0	11/6 11/4 11/1
1-4	<b>Peter Higgins</b>	-4	Duncan Higgins	3 0	11/9 11/7 11/5
1-5	<b>Daniel Clarke</b>	-5	Rob Watkins	3 0	11/6 11/4 11/1

Nom	Avon	Nom	Oxfordshire	Result	Games
-1	John Welton	1-1	<b>Joe Brooke</b>	1 3	11/9 10/12 4/11 8/11
-2	Ian Fudge	1-2	<b>Ross Gore</b>	0 3	5/11 3/11 3/11
-3	Chris Wood	1-3	<b>mike edwards</b>	1 3	9/11 11/9 12/14 8/11
-4	<b>Duncan Higgins</b>	1-4	JASON VARRIE	3 1	11/8 4/11 11/8 11/5
-5	Rob Watkins	1-7	<b>Mark Webster</b>	2 3	9/11 13/11 11/9 9/11 11/13

## Boys county development

- intercounty championships
- boys junior development plan
- events and outreach projects

## Girls county development

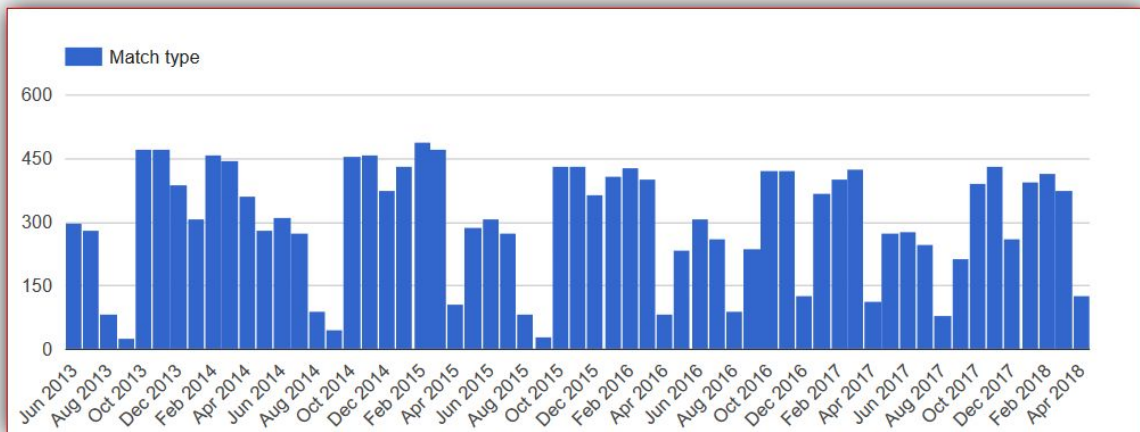
- Girls Development Squads have been running for about 3 years now
- monthly 1.5 hour training sessions held from September 2017 – June 2018

- 7 sessions altogether working on skill development, routines, conditioned games and tactical play
- 18 girls have attended this season, aged 7-16 yrs of mixed ability
- Average attendance 6-10 per session
- Clubs involved are Redland Green, Workout Harbourside, Lansdown & David Lloyd

## League participation

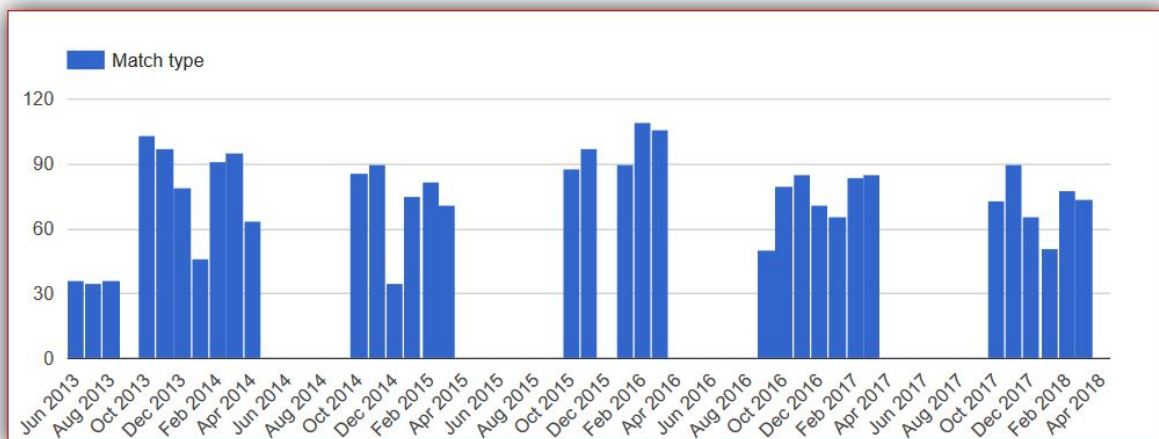
### Players

#### Mixed League



Showing a slight decrease

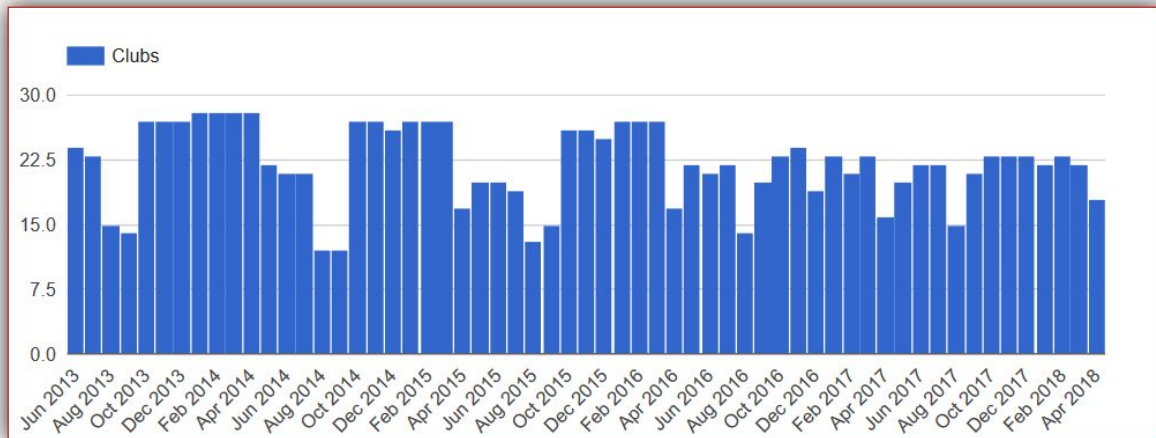
#### Ladies League



Showing a more significant decrease from a high point in 2015-16

## Clubs

### Avon



Losing 6 clubs in the last 4 years - not counting those clubs sharing courts

## ES NGB

- ES are our national governing body (NGB)
- Support squash from new participants, to grass roots up to the elite players with various programmes
- Represent more than 200,000 people in England who play squash each week in more than 4,200 facilities
- Promote and support events at international, national, area and county level for all ages from the Dunlop British Junior Open to the Allam British Open.
- Identify and develop the country's most talented squash players
- Support a vast network of qualified coaches
- Enable funding for local and regional activities that promote participation

## ES membership

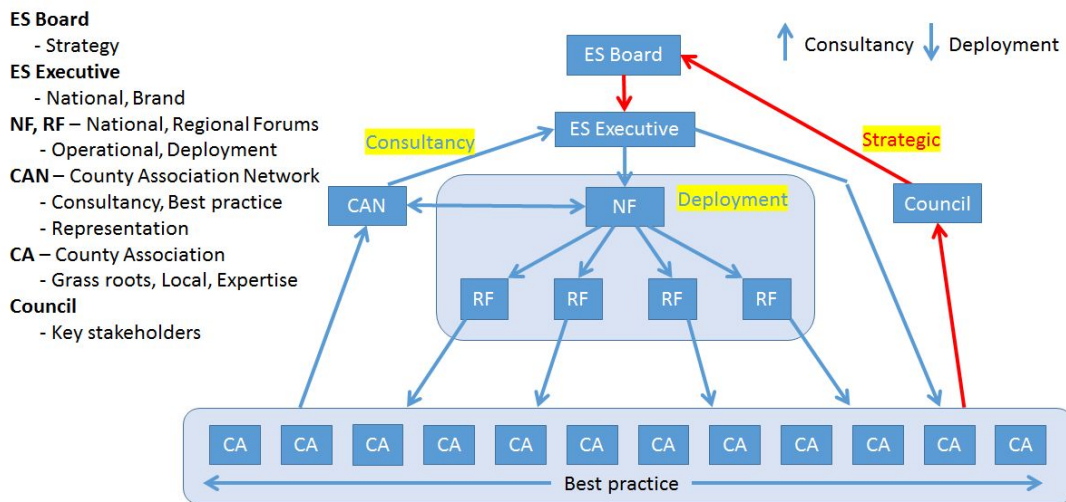
- As Sport England funding declines, so the importance of ES membership to the future of our sport goes up. We want to support them.
- Avon now mandate ES membership for league players
- By doing this we (Avon) get the 'triple rebate' - £3 back per player and 20% of our club affiliation fees. Normally £1 and 12.5%.
- Players also get
- Public liability and personal accident insurance (worth £30)
- Free SquashLevels membership (worth £5)
- Discounts from online squash kit stores (typically 10%)
- Squash Player magazine (worth £5)
- Early access to national tickets, access to training content on the ES website, etc.
- It's worth a tenner!

## CAN - County Association Network

- The CAN is a group of county reps who represent grass roots squash to ES

- We act as consultants for ES if they want to get feedback or input from grass roots
- We have helped with IT feedback, inter-county feedback, membership feedback, ...
- Richard Bickers is the Avon rep and IT consultant
- We are different to the national and regional forums as they are for rolling out ES initiatives whereas the CAN is much more of an input to ES.
- We have been 'constructively vocal' and often don't agree with ES policy

## ES Communication Structure with the CAs



**Only most significant flows shown. Many more direct paths used in practice.**



# Treasurer's report

## Profit and loss

Year to 30th April	Avon & BAD Squash & Racketball		
£'s	2018	2017	Variance
<b>Income</b>			
<i>Winter fees</i>	1,900		
<i>Summer fees</i>	606		
<i>Doubles fees</i>	150		
<i>2016/17 fees paid in year</i>	160		
<b>Total league fees</b>	<b>2,816</b>	<b>3,378</b>	<b>(562)</b>
Coaching	67	-	67
Rebate	630	722	(92)
SW Regional Forum	-	940	(940)
<b>Total Income</b>	<b>3,513</b>	<b>5,040</b>	<b>(1,527)</b>
<b>Expenditure</b>			
<i>Home County Matches</i>	(1,244)		
<i>Away County Matches</i>	(600)		
<b>Total County Matches</b>	<b>(1,843)</b>	<b>(905)</b>	<b>(939)</b>
Coaching	(1,195)	(125)	(1,070)
Coaching Courses	(50)	-	(50)
Marking Courses	(33)	-	(33)
League Trophies	(361)	(136)	(225)
AGM	(478)	-	(478)
Website Management	(357)	(700)	343
Junior t-shirts	(130)	-	(130)
Other Expenses	-	(35)	35
<b>Total Expenditure</b>	<b>(4,447)</b>	<b>(1,901)</b>	<b>(2,546)</b>
<b>Net Profit/(Loss)</b>	<b>(934)</b>	<b>3,139</b>	<b>(4,074)</b>

Overall, the county made a loss of £934 this year, predominantly due to:

- A decrease in **League Fees** collected this year. This is timing, due to being on a cash basis in prior years (ie recognised when cash in, not when the league matches occurred)
- Our **Rebate** from England Squash (ES) was received before the increase in rates. We will see an increase in this from 2018/19 when the increased rates kick in, and our hard work in getting extra members pays off.
- An increase in **County Match** costs. This is further discussed in later slides, but we pay a lot to clubs for court hire, and the Men's senior side had two long away matches this year.
- It was agreed in prior years to pay a flat £1k fee for **Coaching** development in the county. This was changed this year to an hourly rate. Half of this years costs though, are paying coaches the flat rate for agreed work already performed in previous years.

- **League Trophies** and **AGM** have two years of costs in there, as a result of moving away from cash accounting (2017 is 2016's cost..).
- Website management costs in 2017 contained 2016 as well, so were inflated.

Main talking points:

- League fees
- County match costs

Balance Sheet

As at 30th April	Avon & BAD Squash & Racketball		
£'s	2018	2017	Variance
<b>Assets</b>			
Cash	13,648	13,926	(278)
<b>Total Assets</b>	<b>13,648</b>	<b>13,926</b>	<b>(278)</b>
<b>Liabilities</b>			
Accrued expenses			
<i>AGM costs</i>	(150)	-	(150)
<i>League trophies</i>	(215)	-	(215)
<i>County matches</i>	(212)	-	(212)
Provisions			
<i>Potential fine for withdrawal from a county match</i>	(80)	-	(80)
<b>Total liabilities</b>	<b>(657)</b>	<b>-</b>	<b>(657)</b>
<b>Total Assets less Liabilities</b>	<b>12,992</b>	<b>13,926</b>	<b>(934)</b>
<b>Equity</b>			
Profit and Loss account	12,992	13,926	(934)
<b>Total Equity</b>	<b>12,992</b>	<b>13,926</b>	<b>(934)</b>

This is the first year that the accounts have been made on the accruals basis, therefore 2017 numbers will just be the cash balance.

2018 points to note

- AGM costs are for the food tonight..
- County matches are for some court fees at Redland that came through to me after 30th April

- The fine is for a county match back in November. We believe we gave ES plenty of notice that we couldn't play, but they seem to disagree. ES have only just emailed the county about the fine itself, but we are disputing.

## County strategic development plan

### How did we get here?

- landscape for England Squash has changed
- gyms now rule the land
- county has no short, medium or long term plan
- too few people doing far too much
- many consumers and few contributors

### Where do we go from here?

- look at good practice from other parts of the country
- create a development plan for 1, 3 and 5 years
- improve recurring income to fund development
- increase number of coaches actually coaching
- increase participation - especially women and juniors
- set a sustainable pace
- become more professional.

### And?

- how much is it going to cost me?
- it will put off the regular players
- what guarantees can you give me?
- heard it all before, blah blah blah
- I just want to play league and boxes.

### Baby steps

- work with a consultant (Chris Vine from <https://csvconsultants.weebly.com/about.html>)
  - 30+ years experience in a number of leisure facilities in various senior management capacities
  - He has worked as a freelance squash, coaching course tutor
  - latterly is a consultant to England Squash and Racketball
  - programme called "County Squash Development Project"

### What is it?

- Programme run in Essex and the SE counties
- structured approach to understanding the county clubs, coaches and players
- not a short term quick fix
- requires time to rebuild a sustainable, healthy squash community
- based on real data, promotes personal interaction, and is supported by evidence of past successes

### Five key elements

- **Mentoring** - Driven by pre-trained & ongoing mentored County Development Leaders

- **Data** - Understanding the county, gather evidence (full audit) – Clubs/centers/coaches/adults/ juniors etc.
- **Plan** - Puts together a structured Development Plan based on the evidence, including targets and coach development.
- **Measure** - Collecting and analyzing data based on agreed project targets, and adapting to meet changes.
- **Structure** – Helps structure a County Association to manage the project and sustain a vibrant squash scene

### Coaches are key

- Create a Developing Coaches Academy
- Coaches are the building blocks for growth and sustainability
- train new and existing coaches in the business skills needed to realize opportunities
- Academy works with both coaches and clubs to form lasting partnerships

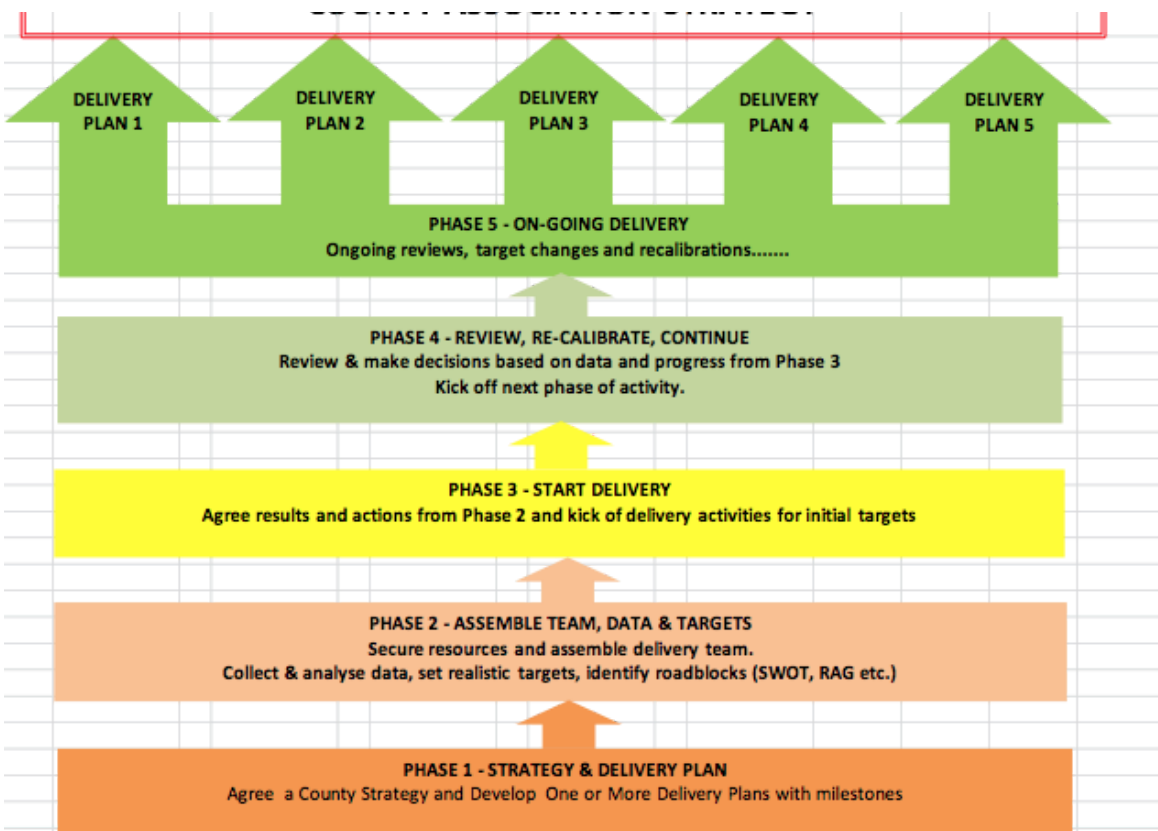
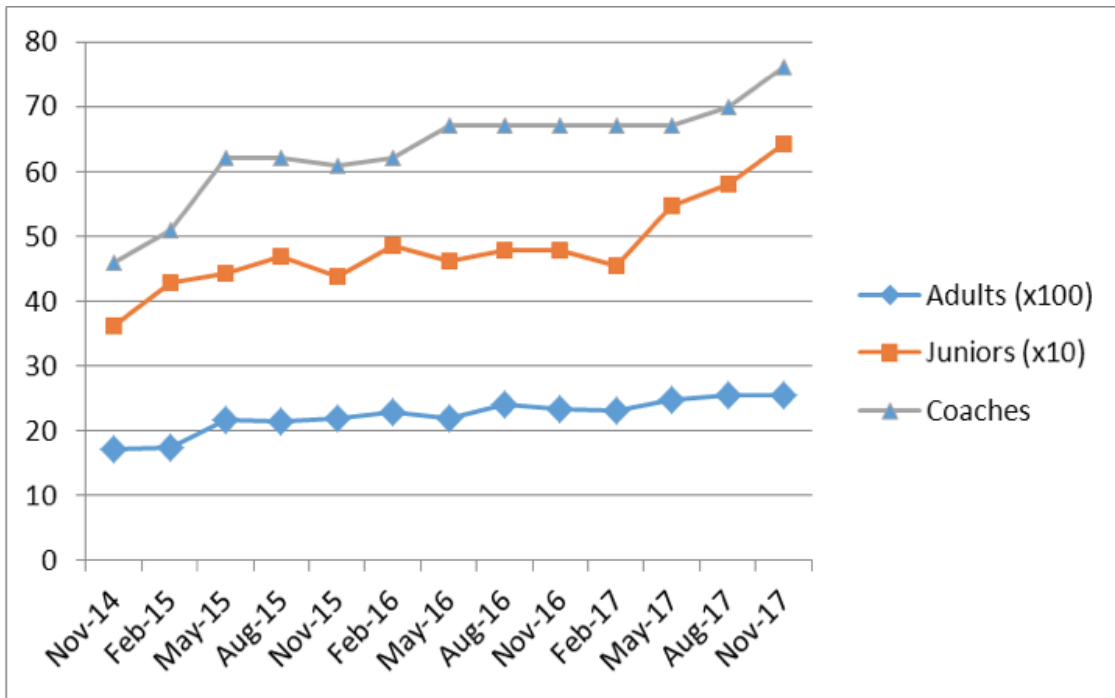
### Invest and grow

- volunteers alone (no matter how passionate) cannot sustain growth
- funded resource with the necessary skills is a fundamental requirement
- Initial introduction costs are small, supplemented through England Squash or the Regional Forums
- Ongoing funding of the program can be a combination of Regional Forum cash from ES and CA raised income
- ES Tools such as “Squash 101 Adult & Junior” and “Squash Girls Can” are essential supported additions to the program
- County Sports Partnership and Sport England Small Grants etc. (incl. potential facility improvements) are also available

### Results from SE Region

- The project run over the last two years (2014-2016) in the SE Region (5 counties) now involves 90 clubs and 240 coaches, Adults up 13%, Juniors up 23%, Coaches up 17%, player/court ratio up 8%
- Significant growth in Essex where program started in Dec 2014.
- The County Association structure also supports the Regional Forums and Strategies
- Contact Details, Peer Reviews & Endorsements
- Several other Counties have taken up the project or shown interest (Cambridgeshire, Yorkshire, and Cornwall).

Data from Essex and shows the impact of a properly mentored development project over the past 3 years, basically - Adults up 49%, juniors up 77%, Coaches up 65%.



### Skills needed to support the committee

- General Secretary (long time unfilled)
- Events Coordinator
- Marketing

- Sponsorship and Fundraising
- Press/Publicity
- Disciplinary Panel
- Develop
- Head of referees
- Safeguarding officer
- Data protection officer
- Social Media (Website, Facebook, Twitter etc)

### Kent example

- 5 years ago, Kent were broke and about to give in
- They had to choose between a new start or slow death...
- At their AGM to they presented a similar plan
- They needed a professional approach and couldn't just rely on a small number of overworked volunteers
- They agreed on a schools program
- Now they have 300 juniors coming through the ranks
- Each league player pay an extra £10 per season
- 2,200 players = £22,000
- Other counties doing the same. Starting at £5 per player but all plan to increase to make the difference. Cheshire, Lancs, Surrey, Sussex, ...

### Questions and discussion ...

The development plan was approved!

### County Matches from 2018/19 onwards...

ES are in the process of rejigging how county matches operate in future seasons. Currently:

- The **home county** is picked at random / on a rotation basis were possible.
- The **home county** is responsible for all costs eg courts and catering
- Under previous agreement, the county pays for the **Men's senior** team's hotel and petrol expenses for away matches

The proposal by ES is to:

- Host county matches at a **centralised venue**
- Hold all events across a maximum of **two weekends**, eg every category plays at the same weekend
- Every team pays **£40** to enter.

The cost implications for this is a potential saving of £400 per year...

Status quo							
£'s	2018	2017	2016	2015	2014	2013	Average
<b>Expenditure</b>							
Home County Matches	(952)						
Away County Matches	(600)						
<b>Total County Matches</b>	<b>(1,552)</b>	<b>(905)</b>	<b>(1,529)</b>	<b>(2,014)</b>	<b>(1,489)</b>	<b>(1,229)</b>	<b>(1,453)</b>

New proposal estimate	
£'s	2019
<b>Expenditure</b>	
Entry fees (£40 per team)	(440)
Away County Matches	(600)
<b>Total County Matches</b>	<b>(1,040)</b>

<b>Saving potential:</b>	413 per year
--------------------------	--------------

**Based upon:**

Same number of teams entered again

Racketball	1
Mens Senior	1
Ladies Senior	2
Mens Masters	3
Ladies Masters	1
Juniors	3
<b>Total</b>	<b>11</b>

Mens senior team still having away expenses paid for.

## League fees analysis

**Key points:**

- League fees have remained relatively flat for a number of years
- The county is currently operating at a loss even without the impact of the proposed development
- Although the reduction in county matches will help, we need extra income to help achieve our goals

Proposal: Raise the league fees to be £1 per player per match (although adjusted so it's still just a total fee for each team entered into a league)

### Status quo (estimates)

£'s	2018	# teams	# matches	# players	Average cost per player per match
Winter fees	1,900	75	20	5	0.25
Summer fees	606	47	10	4	0.32
Doubles fees	150	15	8	4	0.31
<b>Total / Average</b>	<b>2,656</b>	<b>137</b>	<b>38</b>	<b>4.33</b>	<b>0.30</b>

### Proposal (estimates)

£'s	2018	# teams	# matches	# players	Average cost per player per match
Winter fees	7,500	75	20	5	1.00
Summer fees	1,880	47	10	4	1.00
Doubles fees	480	15	8	4	1.00
<b>Total / Average</b>	<b>9,860</b>	<b>137</b>	<b>38</b>	<b>4.33</b>	<b>1.00</b>

Extra income for proposed development 7,204

### Discussion on charging £1 per appearance

£1 per appearance is triple. Can we stage it? Concern over the amount of the increase.

Can we access the regional forum money?

Scrap £5 rebate. Change to £40 winter, £20 summer, £15 doubles.

### Discussion on Inter-county support

Perhaps some contribution for the younger players. Same funding for ladies. Can we get sponsorship? Propose not to cover costs. Need a working group. Rich King, Mark T, Martyn Ibson. Can we publicise inter county results?

### Election of officers

- Chairman - Remains **Seamus Singh** (Proposed Rose, seconded Richard King)
- General Secretary - Remains **vacant**
- Treasurer - Remains **Duncan Higgins** (Proposed Martyn, seconded Richard)
- Mixed League Secretary - Remains **Richard Bickers** (Proposed Rose, seconded Richard King)
- Ladies League Secretary - Become **Ruth Drysdale** and **Pippa** (Proposed Andy, seconded Daryl)



## Roll of honour

### George Morgan best junior

Goes to... **Dan Seymour** for continued hard work and effort over the whole year with a brilliant attitude. Came 6th in the most improved going from 240 to 454!

### Jeremy Burns greatest contribution to squash award

Goes to... **Rose Bamber** for her continued, committed and outstanding work with the juniors.

### Most improved player of the year

**Daniel Pugsley** with a > 250% increase over the last 12 months!

Pos	Player	Club	Team	Division	Last match	Level last year	Level now	Improvement	Chart
1	Daniel Pugsley	Kingsdown	A	(M) Division 6 (17/18)	08 May 2018	194	682	251.5%	
2	Kai Beale	Redland Squash	F	(M) Division 4 (17/18)	26 Apr 2018	809	1,734	114.3%	
3	Federica Pellegrini	Kingsdown		Kingsdown Boxes	25 Apr 2018	40	84	110%	
4	James Cowan	Redland Squash		BLTSC Boxes	08 May 2018	380	781	105.5%	
5	Dave Baldwin	Weston Squash and Racketball Club 2		(M) Division 4 (17/18)	25 Mar 2018	1018	2,085	104.8%	
6	Daniel Seymour	Redland Squash		BLTSC Boxes	24 Apr 2018	240	454	89.2%	
7	Stephen Green	BAWA	D	(M) Division 7 (17/18)	07 Mar 2018	447	844	88.8%	
8	John Gibbens	Westbury David Lloyd	C	(M) Division 7 (17/18)	10 May 2018	670	1,247	86.1%	
9	Chris 'Short Shorts' Mitchell	University of Bath	4	(M) Division 4 (17/18)	25 Apr 2018	894	1,619	81.1%	
10	Paul Thomson	Redland Squash		BLTSC Boxes	11 May 2018	341	616	80.6%	

What that looks like... Good, steady improvement. Something for us all to aspire to!



## SquashLevels Cup

For the player with the greatest 'interest' on the website by player history page views over the last year:

- **Charlie Jones** (Kingsdown, Avon): 756.
- Owen Sanders (Kingsdown, Avon): 508.
- Tomasz Duda (Kingswood, Avon): 444.
- Stephen Hole (Redland Squash, Avon): 382.
- Mike Secker (Kingswood, Avon): 374.
- Lee Manners (Kingswood, Avon): 350.
- Tom Carey (Kingsdown, Avon): 339.
- Kai Beale (Redland Squash, Avon): 335.



- Tom Adkins (Kingsdown, Avon): 334.
- Sam Davidson (Thornbury, Avon): 327.

## League reports

### Mixed league report

- Continuing to run Autumn, Winter, Play-offs, Summer and doubles
- About 800 fixtures. Some rearrangements but nearly all were played.
- Difficult to work around court availability and team constraints. Please be flexible if asked.
- A lot of court sharing going on these days!
- Fire at South Bristol Sports Centre has dislodged Whitchurch and Keynsham. It's the last thing we wanted...
- All play-offs played this year so we have winners for all divisions
- Thornbury A overall champions – average level ~6,000!

### 2017-2018 Mixed league play-offs

- Prem A - Redland A v **Thornbury A**
- Prem B - Westbury DL A v **Redland B**
- Prem C - **Workout D** v David Lloyd Lovecars
- Div 1 - Thornbury B v **Lansdown B**
- Div 2 - **Bath Uni 2** v Bath Uni 3
- Div 3 - Bath Uni 3 v **Lansdown C**
- Div 4 - **Bath Uni 4** v Kingswood U
- Div 5 - **Kingswood U** v Whitchurch A
- Div 6 - Redland H v **Kingsdown A**
- Div 7 - Bath Uni 5 v **Westbury DL C**
- Div 8 - **Westbury DL C** v Lansdown D



### Ladies league report

## Topics raised/Rule updates

The main topic this year was if we should all move to PAR scoring.

Currently the premier divisions all use PAR scoring but everyone else uses HIHO (hand-in, hand-out). The two main concerns with HIHO are:

- It's confusing for the juniors as all their non-league matches are played PAR11 and then they have to play HIHO in the leagues.
- The squash world adopted PAR a long time ago and Avon is stuck in the dark ages. Other counties look at Avon as stuck in history when they see how we operate.

There are concerns about moving to PAR:

- No-one likes change
- Match length - PAR11 too short for non-premier divisions. PAR15 too long to fit the matches in?

**After much discussion it was decided to try it out for Summer league. The premiere divisions will stick with PAR11 and the other divisions will use PAR15. All 2-clear.**

After the Summer trial we'll run a **survey** to see what everyone thinks and that will guide us whether to adopt for the main **Winter leagues**.

## IT update

- Working on a separate site for more social Avon content using Wiki. Watch this space.
- Continuing to develop badsquash. Somerset and Gloucestershire also use it.
- Boxes available
  - Automates nearly everything
  - Gives non-league players a level
  - Wall mode works nicely with a tablet on the wall (e.g. Redland, Weston)
  - Free to use
- Plugs into SquashLevels – the national ranking system. We all have a national ranking. Follow the link from your player details page.
- Working with other system developers to make a tournament system available for ad hoc tournaments across Avon. Make tournaments easy to run.
- GDPR – will need consent from admins and users to use badsquash. Details under Home -> GDPR.

## ES membership tracking

- ES numbers need to be entered into badsquash
- Badsquash makes call to ES membership system to check
- If member via your club then your club's affiliation needs to be current
- You can check by looking at your player history page - it is re-checked at that time

## Avon County Website

New site is nearly ready (<https://www.avonsquash.co.uk/>) but ....

- It needs content!

## Contact the committee

- The Chairman at [chairman@avonsquash.co.uk](mailto:chairman@avonsquash.co.uk)
- The Treasurer at [treasurer@avonsquash.co.uk](mailto:treasurer@avonsquash.co.uk)
- The Mixed League Secretary at [leaguesecretary@avonsquash.co.uk](mailto:leaguesecretary@avonsquash.co.uk)
- Boys Development Coach at [boys.development@avonsquash.co.uk](mailto:boys.development@avonsquash.co.uk)
- Girls Development Coach at [girls.development@avonsquash.co.uk](mailto:girls.development@avonsquash.co.uk)